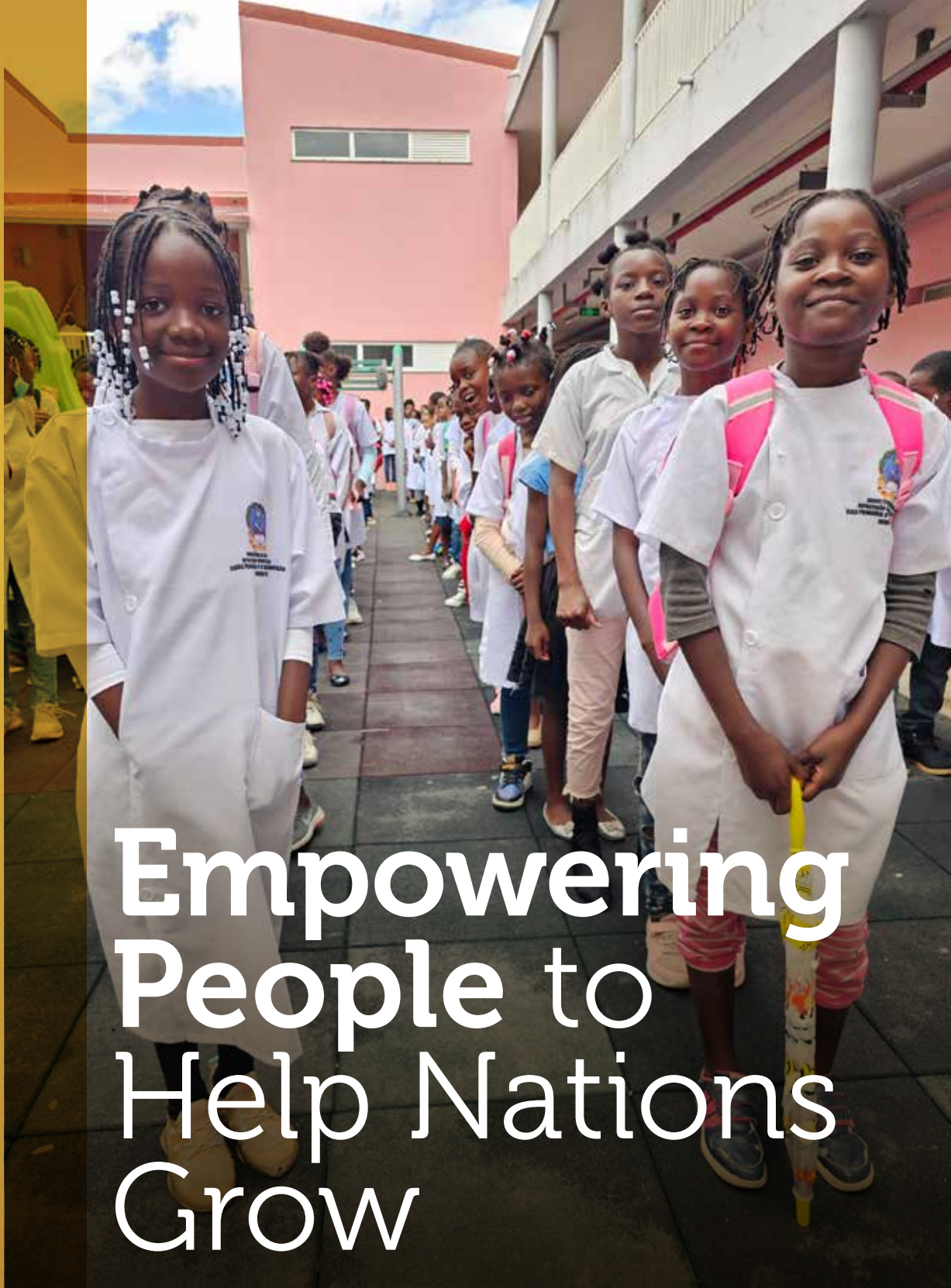




Mitrelli



Empowering
People to
Help Nations
Grow



ABOUT US

We believe **the future of Africa is the future of the world**, and we are committed to its success.

As home to the youngest and fastest-growing population in the world, Africa's needs for infrastructures, public services, employment, and education are rising.

Mitrelli is a leading Swiss-based international company with **over a decade of profound impact in Africa**. We promote national-scale holistic, sustainable solutions to impact countries' economic and social growth.

We are recognized for partnering with African leadership, governments, local businesses, the financial sector, and communities, for implementing transformative solutions to national initiatives that improve quality of life and support the United Nations' Sustainable Development Goals (SDGs).

We believe that **people are the key drivers for change**, and together with our unique sectors of expertise, we invest in innovation-driven solutions ranging from education to healthcare, food security, clean water and energy, urbanization, digital transformation, as well as culture. Collaboration across our sectors allows us to create **customized, nation-wide projects that positively impact the lives of millions**.

Headquartered in Switzerland, thousands of employees across Africa, presence on 3 continents, Mitrelli creates new jobs and economic growth opportunities every day. **Fueled by people and innovation, we share the vision and commitment to build a more sustainable tomorrow.**



Switzerland



Angola



Côte
d'Ivoire



Senegal



Mozambique



Israel



Cyprus

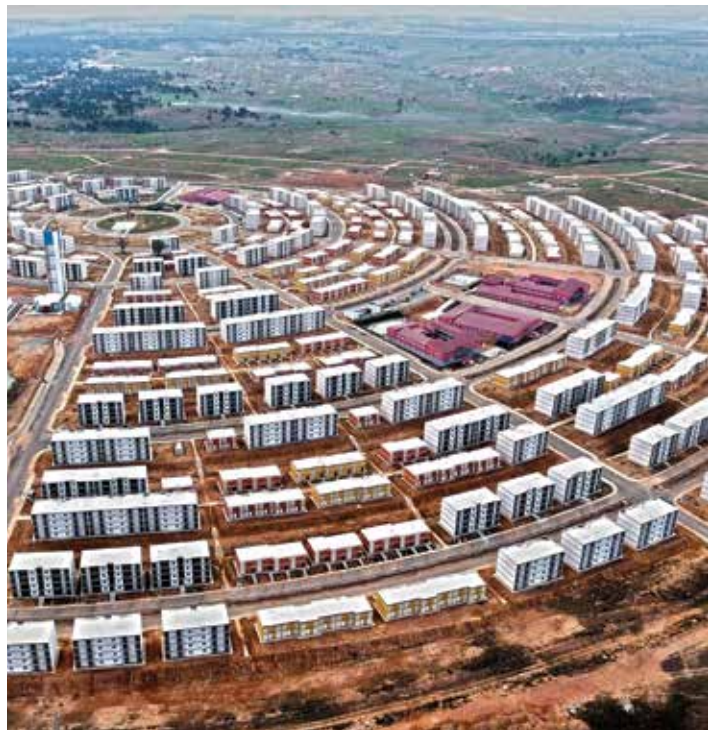


Portugal



Netherlands

OUR UNIQUE VALUE



Africa-Focused Commitment:

Our unwavering dedication to Africa drives every aspect of our business.

National-Scale Innovative Solutions:

Collaborating closely with local leadership and partners, we provide comprehensive, tailor-made, turnkey solutions from project inception to implementation to management, including training, knowhow, and ongoing support for continuity.

Diverse Expertise & Synergy, Holistic Approach:

Our cross-sector experience spans from food security to water, energy, healthcare, education, urbanization, technology and social responsibility ensuring innovative, holistic project delivery.



Innovation and Technology:

We integrate innovation and cutting-edge technologies for more efficient, sustainable outcomes.

Proven Impact:

With a substantial track record of national-scale projects, we've delivered successful initiatives across sectors, demonstrating our commitment to tangible results in Africa.



FOOD SECURITY

OUR IMPACT DATA:

9K tonnes

Total grain production per year

Although Africa has 65% of the world's uncultivated arable land, it remains a net importer of food.

African Development Bank, 2019

Mitrelli food security sector develops innovative agricultural solutions using advanced technology and sustainable farming practices to address short and long-term food challenges in Africa.

Solutions that include food security and sovereignty, job creation, as well as economic and industrial development.



WATER

OUR IMPACT DATA:
430K people
Enjoy access to potable water

418 million people in Sub-Saharan Africa lack access to safe drinking water.

UNICEF, 2022

Mitrelli water sector offers comprehensive solutions in distributing, treating, and conserving water — wherever and however it is needed most — from safe drinking water, to sanitation facilities and irrigation.





HEALTHCARE

OUR IMPACT DATA:

200K

Patients served since 2020

Only 52% of Africa's citizens have access to the healthcare they need.

Africa Health Agenda International Conference Commission, 2021

Mitrelli healthcare sector provides access to quality healthcare by building infrastructure solutions that connect healthcare systems between urban and rural areas, as well as provide medical training.

From developing rural clinics to designing, engineering, and constructing regional state-of-the-art hospitals, to telemedicine, Mitrelli helps make medical treatment more accessible and equitable, while creating essential jobs.



EDUCATION & PROFESSIONAL TRAINING

OUR IMPACT DATA:

100K+

Professional graduates

In Africa, about 1 in 5 primary school-age children and over half of upper secondary school-age adolescents are not attending school. In roughly half of African countries, the out-of-school rate for upper secondary school-age students exceeds 50%. UNESCO, 2023

Mitrelli education sector provides four innovative models of education customized to match unique regional challenges and to create employment opportunities for the next generation work force.

These include increasing digital literacy, preparing for the youth bulge, raising low youth employment rates, and bridging the growing teacher gap.





Urban Communities

OUR IMPACT DATA:

40K	140K	60K
Housing units	Inhabitants	Pupils

By 2050 60% of Africans will be living in cities — yet half of these urban areas have not been built.

UN-Habitat, 2020

Mitrelli urbanization sector offers sustainable solutions for rapid urbanization.

Providing new residential, commercial, and public structures contributes to personal quality of life and thriving communities.



ENERGY

OUR IMPACT DATA:
363K people
Connected to electricity

Over 640 million people in Africa have no access to energy, with an electrification rate of just 40% across the continent.

African Development Bank, 2019

Mitrelli energy sector provides cost-effective solutions for electricity production, transmission, and distribution.

These include expanding existing infrastructure, as well as establishing off-grid and renewable energy sources. Together, Mitrelli's solutions support sustainable growth and economic development.





INFORMATION & COMMUNICATION TECHNOLOGIES

OUR IMPACT DATA:

6.5M

Citizens impacted

In 2020, only 50% of Africa's urban residents had internet access due to the high cost of broadband services.

African Development Bank, Cities Alliance, UNOPS 2022

Mitrelli ICT sector tackles infrastructural challenges by improving connectivity and creating a conducive and secure environment for ICT usage.

These solutions have the power to digitally transform businesses, cities, and nations through innovation and economic development.



GEOGRAPHICAL INFORMATION SOLUTIONS

OUR IMPACT DATA:

200K

Properties registered

Land ownership is a significant obstacle to wealth creation and economic prosperity in Africa. Only 4% of countries have documented the land in their capital cities.

The Economist, 2020

Mitrelli geographical information solutions help national governments enable effective land management and planning.

By supporting taxation and revenue generation, these practices improve infrastructure and urban services to ensure social equity, and contribute to economic growth by boosting real estate value.





CULTURE

OUR IMPACT DATA:

~20m²
Total area of new
Luanda Science
Center

1K
Jobs
created

Tourism and heritage, particularly World Heritage, can play a combined role in promoting African culture, as well its relation with the principles and imperatives of sustainable development.

Mitrelli culture projects strive to develop projects that weave the unique stories of each country into a rich fabric which strengthens national identity.

Beyond bringing pride to its people, these initiatives can be used to promote internal and external growth by creating necessary infrastructure, new jobs, and leveraging cultural unity.



SOCIAL RESPONSIBILITY

The efforts of Mitrelli in driving sustainable development in Africa are enhanced through the strategic philanthropy initiatives of the Menomadin Foundation, dedicated to empowering individuals, communities, and nations.

Under the sponsorship of Mitrelli and the management of Menomadin, **the Angolan non-profit Fundação Arte e Cultura** operates a vibrant culture and art center in Luanda.

The center boasts an amphitheater for concerts and plays, a thriving art gallery, a community garden, well-equipped classrooms for various workshops and courses, and a versatile common area for gatherings and cultural events.

These offerings provide children and youth with diverse enrichment classes, offer vocational training programs for women, and furnish guidance programs for young adults – all of which are provided free of charge.



IMPACT INVESTMENTS

Collaborating closely with Mitrelli, the Menomadin Foundation tackles global challenges by harnessing innovation through Impact Investments.

Our purpose-driven investment team specializes in promising impact-oriented startups across various sectors, such as clean and alternative energy, water, climate, foodtech, and agritech.

Aiming to propel the growth of our portfolio companies, we not only extend access to our expansive network at the forefront of the Startup Nation but also **offer them access to the expertise, well-structured processes, and professional knowledge within Mitrelli.** This collaborative effort enhances their capabilities within their respective domains. Together, we channel the potential of groundbreaking technologies to drive the growth of the African continent.



MITRELLI AT A GLANCE

Innovation is at the heart
of everything we do.

Global Reach:

HQ in Switzerland,
thousands of employees
across Africa, presence
on **3 continents**.

Diverse Team:

employees,
over 80% in Africa.

>10 Years, Millions

Impacted:

Over a decade of
impact, touching
millions of lives.

Innovative

Finance:

Unique financial
business models.

Extensive

Project Portfolio:

Close to 100 active
customized turnkey
projects.

SDG Alignment:

Projects support **UN's**
Sustainable Development
Goals (SDGs).

Impact

Investing:

Engaged to create
meaningful change
in the communities
we serve.

Social

Initiatives:

Over 50 impactful
social projects.



Mitrelli

Mitrelli Group Swiss AG

Maurerstrasse 8, 8500 Frauenfeld, Switzerland

www.mitrelli.com